

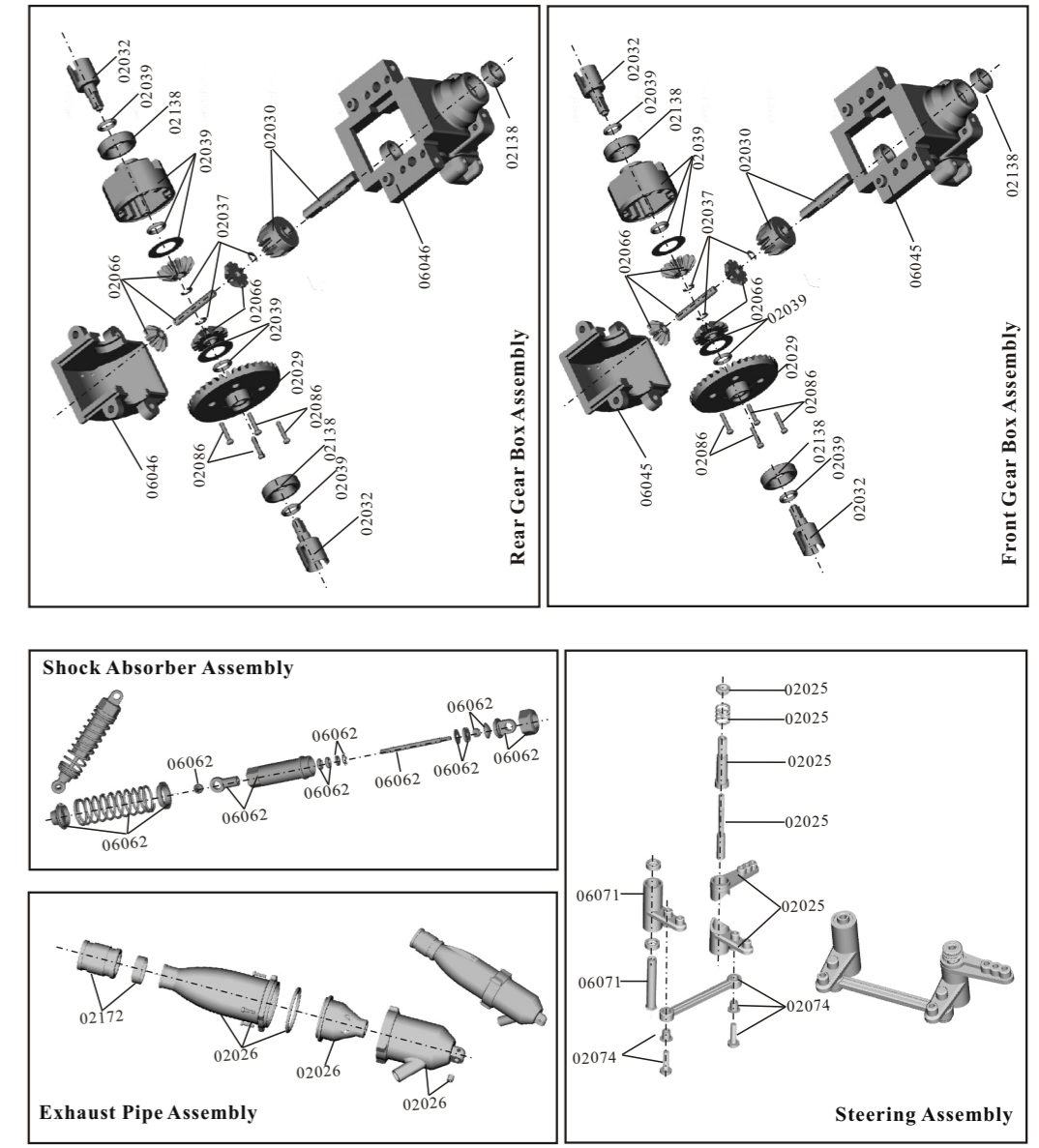
1/10th 4WD Nitro Power R/C Off-Road Buggy

Specifications:									
LENGTH	WIDTH	HEIGHT	WHEEL BASE	DRIVE SYSTEM	GROUND CLEARANCE	DIAMETER OF WHEEL	WIDTH OF WHEEL	GEAR RATIO	SERVO
400mm	250mm	160mm	275mm	4WD Shaft Drive	26mm	86mm	32mm(F) 40mm(R)	1:5.84(L) 1:8.58(H)	3kg

Spare Part				
06056-Chassis	06051-Front Upper Arm(L/R)	06052-Front Lower Arm	06053-Rear Lower Arm	06054-Rear Anti-Squat Plate
06055-Front Upper Arm Holder	06062-Shock Absorber	06058-Front Shock Tower	06059-Rear Shock Tower	06043-Steering Hub (Left/Right)
06044-Rear Wheel Hub Carrier (Left/Right)	06045-Front Gear Box Housing	06046-Rear Gear Box Housing	06063-Front Gear Box Complete	06064-Rear Gear Box Complete
02173-Suspension Arm Pad	02074-Steering Ackerman Joint	06071-Steering Assembly B	02025-Steering A	02110-Radio Tray
02046-Radio Tray Post A	02047-Radio Tray Post B	02006-Front/Rear Throttle Mount	06034-Centre Diff. Complete	06017-Wing Brace
06020-Wing Mount	06100-Old Style Wing	06021-Wing	06057-Tail Wing Post	06004-Front Body Mount
06003-Front Bumper	06101-Old Style Off-road Spoke Front Wheel Rim	06102-Old Style Off-road Spoke Rear Wheel Rim	06009V-V-Tread Off-Road Buggy Front Tire +Insert Sponge	06010V-Front Wheel Complete with Old Style Wheel Rim And V-Tread Tyre

Spare Part				
06025V-V-Tread Off-Road Buggy Rear Tire +Insert Sponge	06026V- Rear Wheel Complete With Old Style Wheel Rim And V-Tread Tyre	06008-Front Wheel Rim	06024-Rear Wheel Rim	06210V-Front Wheels Complete
06211V-Rear Wheel Complete	02168-Wheel Axle	02100-Wheel Hex.	08027-Pin 2*10mm	02070-Battery Compartment
02111-Battery Cover	02072-Servo Arm	03027-Charger/Battery Wire Connector	06016-Front/Rear Link &Steering Servo Link	02024-Diff.Main Gear Complete
02029-Crown Gear (38T)	02030-Drive Gear	02066-Diff.Pinions+ Pin	06232-Spur Gear(47T)	06033-Spur Gear(42T)
02068-Engine Flywheel	02023-Clutch Bell (Double Gear)	02032-Universal Joint Cup C	02034-Universal Joint Cup A/Grub Hex. Screw 4*4	02016-Universal Joint Cup B/Set Screws 4*4
02003-Rear Dogbone /Centre Dog bone Hole Track:55mm Total Length:61mm	06006-Front Dogbone 76mm	06061-Dogbone(F/R) 84mm	02036-3*44mm Front Suspension Arm Pin A	02063-3*54mm Rear Suspension Arm Pin A
06060-Front Lower Suspension Arm Round Pin B Ø3*39mm	02004-Fuel Tank	02058-Fuel Tube	02172-Exhaust Pipe Tubing	02026-Exhaust Pipe
02028-Air Filter W/Sponge	02031-Exhaust Manifold	02048-Clutch Shoe(w/ Spring) 02048(M) 02048(F)	02049-Engine Holder W/Column Head Screws M3*10	02011-Handle

Upgradable Optionals				
166004-Aluminum Shock Absorber	166015-Universal Drive Joint	166611-Aluminum Steering Hubs(L/R)+Ball Head Nut	166612-Aluminum Rear Hub Carrier (L/R) +Ball Head Nut 4P	166617-Aluminum Front/Rear & Servo Link 2P/Flat Head Machine Screw*14*4P/Nut M3*4P
166618-Aluminum Front Upper Arm /M5 Ball Head Screw 2P	166619-AL. Front Lower Arm/Cap Head Machine Screw 3*14* 2P/Grub Screw 4*6* 2P/M5 Ball Head Screw 4P	166621-AL. Rear Lower Arm/Cap Head Machine Screw 3*14* 2P/Grub Screw 4*6* 2P/M5 Ball Head Screw 4P	166622-Aluminum Front Shock Tower	166623-Aluminum Rear Shock Tower
188865-Aluminum Fuel Tank/Radio Tray	106672-Alum.Rear Wheel Rim	106673-Alum. Front Wheel Rim 2P	166644-Aluminum Wing Stay=Cap Head Machine Screw 10p	166645-Aluminum Wing Adjustable Mount
166644-Aluminum Battery Cover	166670-Alum. Front Body Post+Cap Head Machine Screw 1P	80237-Anodized Aluminum Servo Arms	188831-Aluminum Front Upper Arm Mount+Cap Head Machine Screw 4P	02031A-Polished Aluminum Manifold+ Pad
02156-Aluminum Fuel Filter	04104-Alum.Capped Air Filter Cover Optional Use			



Spare Part				
02174-Throttle/Brake Assembly	02059-Exhaust Pipe Holder w/Cap Screw & Nut	02044- Disc Brake	02039-Differential Box+Seals+Washers	02043-Brake Cam
02045-Two Way Drive Clutch	02054-Centre Gear Shaft	02067-Hex.Bearing	16602-Switch	02065-Flywheel Pilot Post
02155-Chargeable Battery Pack (6V 1100mA)	02171-Sway Arm Adjuster	02153-Ball Head Nut	02152-M5 Ball Head Screw	02038-Ball Head Screw
06023-Shock Ball Stud B	06007-Shock Ball Head C	02164-Ball Head Cap	02101-Steering Bushing	02102-Nylon Nut M3
02055-Nylon Nut M4	02037-E-Clip (Ø7.04.Ø2.5.Ø2.3)	02057-Antenna Pipe	02053-Body Clip	02103-Zip Tie
02078-O-Ring	02138-Ball Bearing Ø15*Ø10*4	02139-Ball Bearing Ø10*Ø5*4	02079-Oil Bearing Ø15*Ø10*4	02080-Oil Bearing Ø5*Ø10*4
02501-Washer 8*5.2*0.5	08024-Discal Screw M3*11	02098-M3*4 Grub Hex. Screw	02099-Grub Hex. Screw M4*4	61018-Grub Hex. Screw M4*10
02181-Cap Head Self-Tapping Screw 3*15 10P	02083-Cap Head Self-Tapping Screw 3*12 6P	02081-Cap Head Self-Tapping Screw 3*8 6P	02082-Cap Head Self-Tapping Screw 3*10 10P	02084-TT3*20 BH Screw 4P

Spare Part				
02176-3*12 Cap Head Machine Screw 4P	02097-3*14 Cap Head Machine Screw 6P	02096-3*10 Cap Head Machine Screw 6P	18243-3*8 Cap Head Machine Screw 10P	02085-Round Head Self-Tapping Screw 2*8 8P
02086-Round Head Self-Tapping Screw 2*10 10P	81220-14-Round Head Self-Tapping Screw 3*12 8P	01083-Round Head Machine Screw 3*11 6P	81220-5-Countersunk Cross Head Machine Screw 3*14 4P	02087-Countersunk Cross Head Self-Tapping Screw 3*10 15P
02088-Countersunk Cross Head Self-Tapping Screw 3*14 13P	02090-TPE3*25FH Screw 4P	02092-ISO 3*10 Screw 8P	02094-M3*30 Column Head Hex. Screw 4P	02093-M3*10 Column Head Hex. Screw 10P
02095-M3*8 Column Head Hex. Screw 4P	02060-Engine 16CXP/18CXP	02200-New Engine 18CXP/20CXP	11016-Pull Starter For 02200 Only	

Upgradable Optionals				
12203-Aluminum Radio Tray Mount/Post+Cap Head Machine Screw 3*10*4P+3*8*4P+Flat Head Machine Screw 3*10*4P	12205-Aluminum Engine Mount	12206-Aluminum Lightweight Flywheel	102009-Aluminum Exhaust Pipe	122042-Aluminum Wheel Hex Mount
122048-Aluminum Locknut M3	122049-Aluminum Locknut M4	12225-AL. Centre Diff. Mount+ Posts/Flat Head Machine Screw 3*10*8P	12227-Aluminum Suspension Arm Reinforcement Bracket	122234-Aluminum Rear Anti-Squat Plate/Flat Head Machine Screw 3*10*2P
122240-Aluminum Ackerman Plate	122257-Alum.Steering Servo Saver Complete	122259-Aluminum Fuel Tank Cover+Cap Head Machine Screw 2P	122273-Aluminum Clutch Shoe	122275-AL. Gear Box/Flat Head Machine Screw 3*10*4P /Cap Head Machine Screw 3*15*2P+3*10*2P/Round Head Machine Screw 3*12*2P

